

Birmingham City Council - Sport Capital Development

October 2024



 **RESET**

 **RESHAPE**

 **RESTART**

Refurbishment Projects

- ▶ Birmingham City Council's commitment to upgrade the sporting infrastructure in the city demonstrated through current projects:
 - ▶ Tennis Court Refurbishments
 - ▶ Basketball Court Refurbishments
 - ▶ Football Foundation Playzone developments
- ▶ Over £2.7m of investment into local communities through capital grants, leveraged through collaborative partnerships



Tennis

- ▶ 8 sites refurbished, funded by LTA grant of £310K
- ▶ Site selection determined through LTA court assessments and findings from the Playing Pitch Strategy (2017) and community consultation
- ▶ Assessments involved court surface quality including grip, presence of moss, loose gravel, line marking quality, evenness, evidence of inappropriate use (ASB, littering) and lighting and accessibility assessments
- ▶ Grant conditions include implementation of a financially sustainable delivery model with sites ranging from 100% free access to a mixed model of pay & play and a minimum % of free access



Tennis

Refurbished Sites:

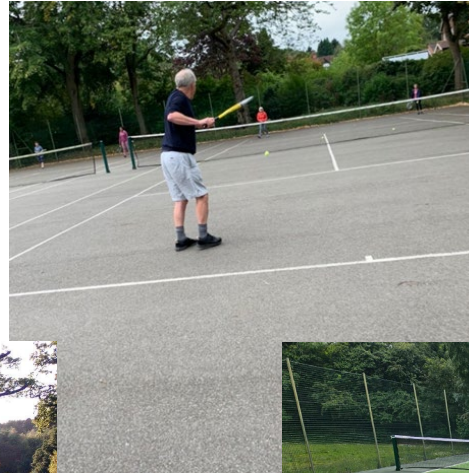
- ▶ Bournville Park – 3 courts
- ▶ Brookvale Park – 2 courts
- ▶ Cannon Hill Park – 5 courts
- ▶ Gilbertstone Recreation Ground – 3 courts
 - ▶ Lickey Hills Country Park – 4 courts
 - ▶ Pype Hayes – 4 courts
 - ▶ Rookery Park – 2 courts
 - ▶ Summerfield Park (gates only)
- ▶ Ward End (2 courts) to be funded via Shared Prosperity Fund / commencing end of October 2024
- ▶ Procure external operator to manage bookings, deliver a community coaching programme, manage memberships, leagues and engagement with local groups and clubs



Tennis Court Refurbishments



Lickey Hills
Country Park



Bournville
Park



Basketball 3x3 Legacy Project

- ▶ 17 site court refurbishment programme, legacy of the B2022 Commonwealth Games
- ▶ £650K funding through BCC Community Infrastructure Levy (CIL), Sport England and UK Government Shared Prosperity Fund
- ▶ Activation programme funded and supported by Basketball England, Sport Birmingham, StreetGames and local clubs, with opportunities to get involved
- ▶ Site selection determined by desktop audit, site visits and court surveys, IMD, crime statistics, consultation, and priority areas for the City Council.



Basketball 3x3 Legacy Project

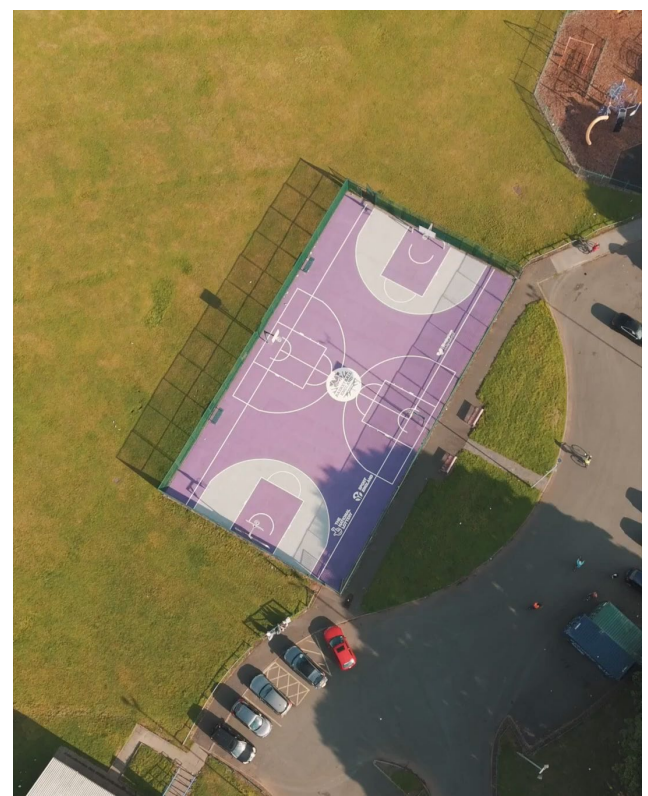
Court Locations	
Chamberlain Gardens	Clifton Road YC
Cotteridge Park	George's Park
Gilbertstone RG	Hamstead Playing Fields
Kings Heath Park	Musgrave Road Park
Nechells Park / Mount Street	Nechells Wellbeing Centre
Perry Common RG	Queen's Park
Shenley Fields	St Paul's trust
Tower Street RG	Victoria Common
Woodview Park	



Basketball 3x3 Project



Hamstead before



Hamstead Playing Fields, court launch 21st September

Playzones

- ▶ Football Foundation programme to develop Playzones (multi-use games areas) in priority places with a mix of sports markings and equipment
- ▶ Phase 1 x 4 sites. FF committed funding of £900K plus match via BCC/SPF/SE/EA Sports £325K. 3 sites completed to date.
- ▶ Phase 2 x 2 sites. FF committed funding of £420K plus match via BCC/SPF £140K
- ▶ Site selection and sports determined by desktop audit, site visits, IMD, consultation and local insight, and priority areas for the City Council and NGBs.
- ▶ Community-led activation – development with local organisations on usage and management of bookings system.



Playzones

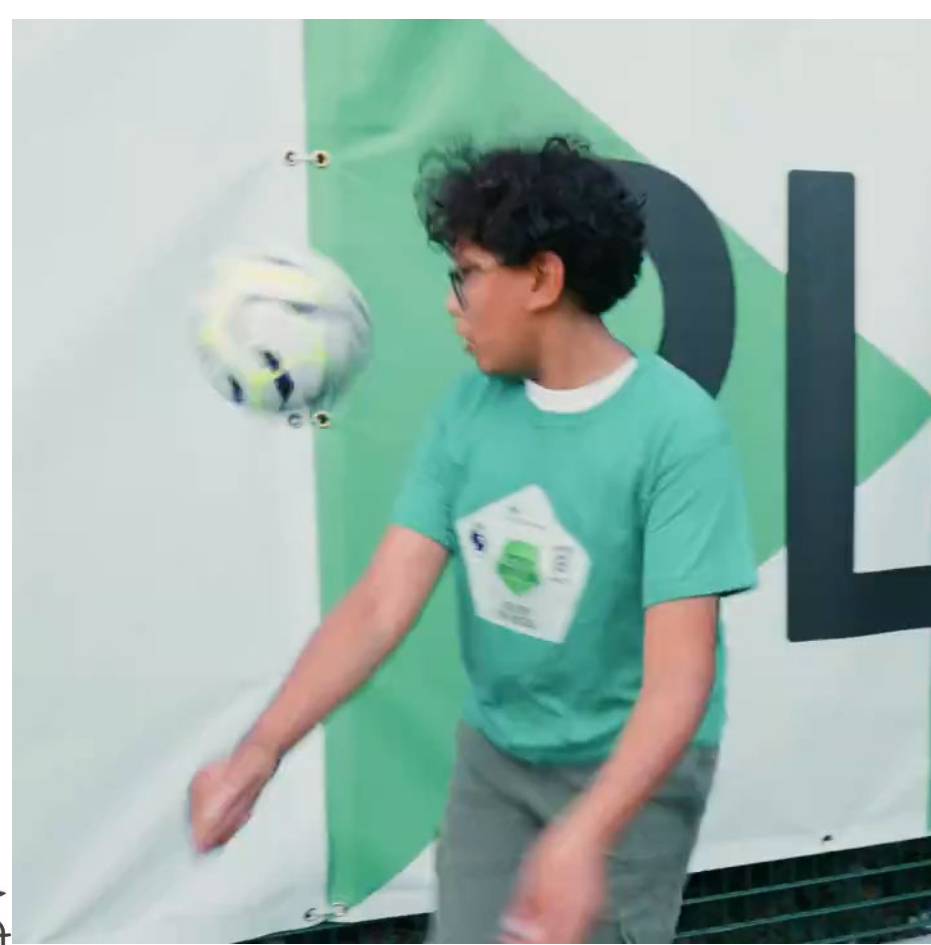
Playzone Locations Phase 1	
Concord Youth Centre	Complete
Batchelors Farm Park	Complete
Action Indoor Sports Centre	Complete
Adderley Park	In planning
Playzone Locations Phase 2	
Nechells Wellbeing Centre	Pre-planning
Summerfield Community Centre	Pre-planning



Football Foundation



Concord Youth Centre Launch
13th September



Approach to Activation

Approach

- ✓ Multi stakeholder action to distribute power and resource into place
- ✓ System and place partner collaboration
- ✓ Insight and learning
- ✓ Enhancing community leadership and voice
- ✓ Co-creation
- ✓ Empowering the voluntary sector



Phase 1: Strategic Consortia

Currently 13 system and place partner representatives including Birmingham City Council, TAWS, Street Games, and NGB's; additional 4 in the pipeline

Strategic commitment to:

- Tackle structural inequalities
- Strengthen community and individual capacity
- Integration of sport and physical activity into sectors



Phase 2: Community Networks

1. Ambition to create facilitate hyper local community networks surrounding Playzones and other developments
2. Refresh insight and intelligence for the locality
3. Devise activation plans that responds directly to community need
4. Leverage resource by way of capacity, knowledge, expertise and investment into the network



Call to Action

- ✓ System and place partner with a resource offering
- ✓ Community groups with an appetite to contribute to local intelligence and activation of spaces



Hayley.james@sportbirmingham.org